

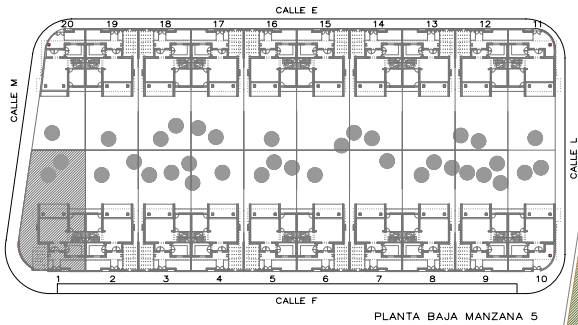
PROMUEVE:



VENDE:

iGalvin - Inmobiliaria

Contacto: [info@igalvin.es](mailto:info@igalvin.es)  
Tfno.: 687.993.575



PLANTA BAJA MANZANA 5



VIV. PAREADA ESQUINA TIPO 3

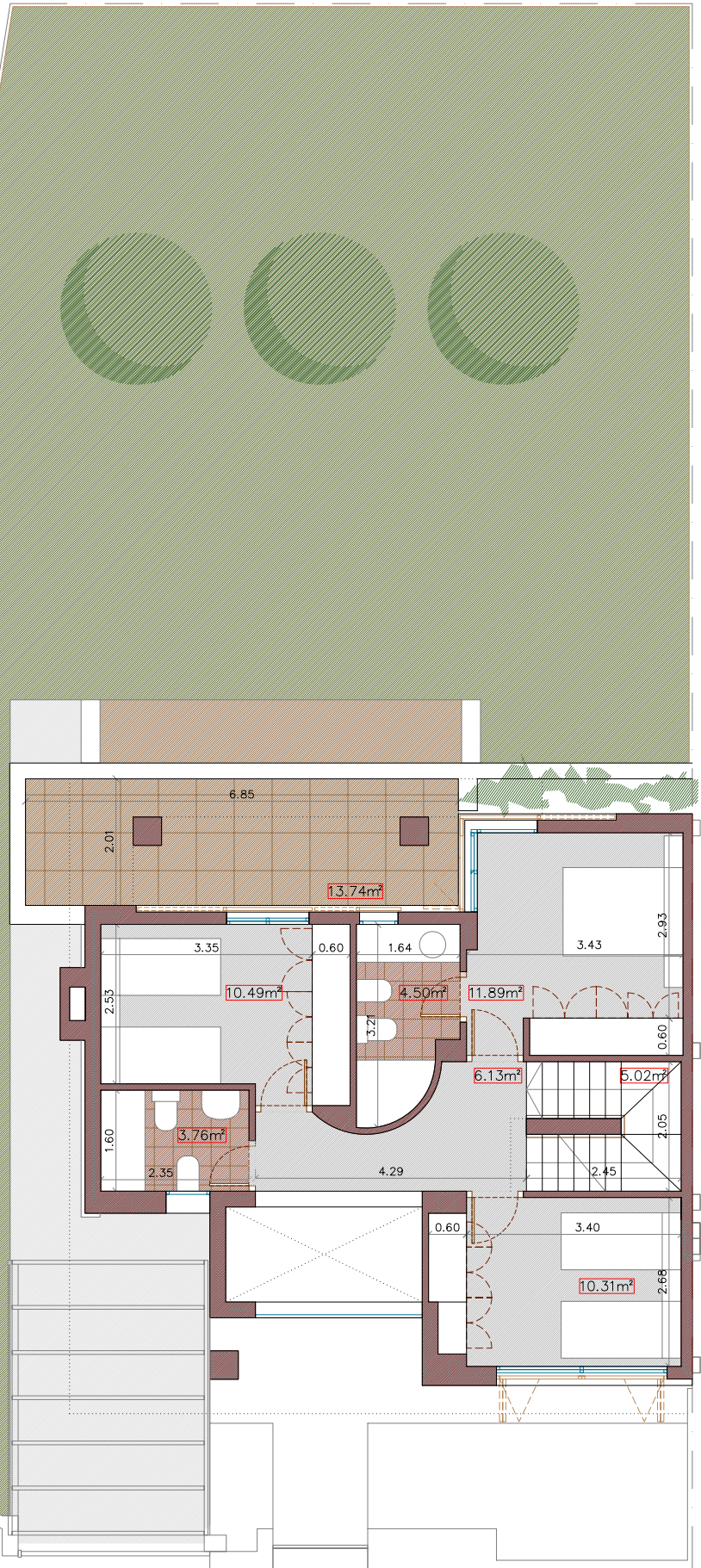
| DESGLOSE DE SUP. ÚTILES P. BAJA   |                            |
|-----------------------------------|----------------------------|
| ENTRADA                           | 4.68 m <sup>2</sup>        |
| COCINA                            | 10.21 m <sup>2</sup>       |
| ESTAR-COMEDOR                     | 28.32 m <sup>2</sup>       |
| DISTRIBUIDOR                      | 1.30 m <sup>2</sup>        |
| ASEO                              | 1.57 m <sup>2</sup>        |
| DORMITORIO 1                      | 11.48 m <sup>2</sup>       |
| PORCHE TRASERO*                   | 5.00 m <sup>2</sup>        |
| <b>TOTAL ÚTILES P.BAJA</b>        | <b>62.56 m<sup>2</sup></b> |
| * Sup.cubierta. Computable al 50% |                            |

Nº:1

| DESGLOSE DE SUP. ÚTILES P.ALTA |                             |
|--------------------------------|-----------------------------|
| DORMITORIO 2                   | 10.31 m <sup>2</sup>        |
| DORMITORIO 3                   | 10.49 m <sup>2</sup>        |
| DORMITORIO 4                   | 11.89 m <sup>2</sup>        |
| BAÑO 1                         | 4.50 m <sup>2</sup>         |
| BAÑO 2                         | 3.76 m <sup>2</sup>         |
| ESCALERA                       | 5.02 m <sup>2</sup>         |
| DISTRIBUIDOR                   | 6.13 m <sup>2</sup>         |
| TERRAZA*                       | 6.27 m <sup>2</sup>         |
| CASTILLETE                     | 2.75 m <sup>2</sup>         |
| <b>TOTAL ÚTILES P.ALTA</b>     | <b>61.12 m<sup>2</sup></b>  |
| <b>TOTAL SUP. ÚTILES</b>       | <b>123.68 m<sup>2</sup></b> |

| CUADRO DE SUP.CONSTRUIDAS |                             |
|---------------------------|-----------------------------|
| VIVIENDA P. BAJA          | 72.35 m <sup>2</sup>        |
| VIVIENDA P. ALTA          | 57.80 m <sup>2</sup>        |
| PORCHE TRASERO*           | 5.00 m <sup>2</sup>         |
| TERRAZA*                  | 6.27 m <sup>2</sup>         |
| CASTILLETE ESCALERA       | 11.18 m <sup>2</sup>        |
| <b>TOTAL SUP. CONST.</b>  | <b>152.60 m<sup>2</sup></b> |

| SUPERFICIES DE PARCELA                                     |                       |
|--|-----------------------|
| VIVIENDAS TIPO:  | 268.20 m <sup>2</sup> |
| Nº: 2, 3, 4, 5, 6, 7, 8, 9, 12, 13, 14, 15, 16, 17, 18, 19 |                       |
| VIVIENDAS ESQUINA 1:                                       | 232.11 m <sup>2</sup> |
| Nº: 10 Y 11  |                       |
| VIVIENDA ESQUINA 2:  | 222.53 m <sup>2</sup> |
| Nº 20  |                       |
| VIVIENDA ESQUINA 3:  | 307.05 m <sup>2</sup> |
| Nº 1   |                       |



PLANTA PRIMERA

E: 1/100